

Promatec

Company profile



Who we are

Founded in 1968 in Milan, Promatec is today a benchmark in the Italian market for the supply of high- and low-pressure fluid dynamics products and solutions.

With over fifty years of experience, the company stands out for its continuous focus on innovation and the reliability that makes it a successful partner both nationally and internationally.

Promatec is also ISO 9001 certified.



Filippo Marelli
CEO

Vision & Mission



We aim to strengthen our presence alongside businesses and partners by offering tailor-made solutions based on quality, innovation, technology, and sustainability. We operate with competence even in complex fluid dynamics contexts, providing “solutions under pressure.”



Vision

Be the benchmark for quality, service, and complex solutions.



Mission

Design and deliver complete and customized solutions for the fluid dynamics market.

Our history



1968

Promatec
Founded

1973

New HQ in
Settimo Milanese

1999

Introduction of the
first low-pressure
product

2005

New HQ in
Albairate

2008

Acquisition of
Hydraulics Car

2022

Expansion of HQ
from 3,000 to
6,000 m²

2023

Merger with
Cablecraft Italia

2025

Installation of
new CRC and
TRS services

Key figures



Markets

65% High-Pressure Division
35% Low-Pressure Division



Team

43 employees (2025)



Stock

Over 2 million parts, 7,400 items
Stock value: €4,000,000

20.793.000€

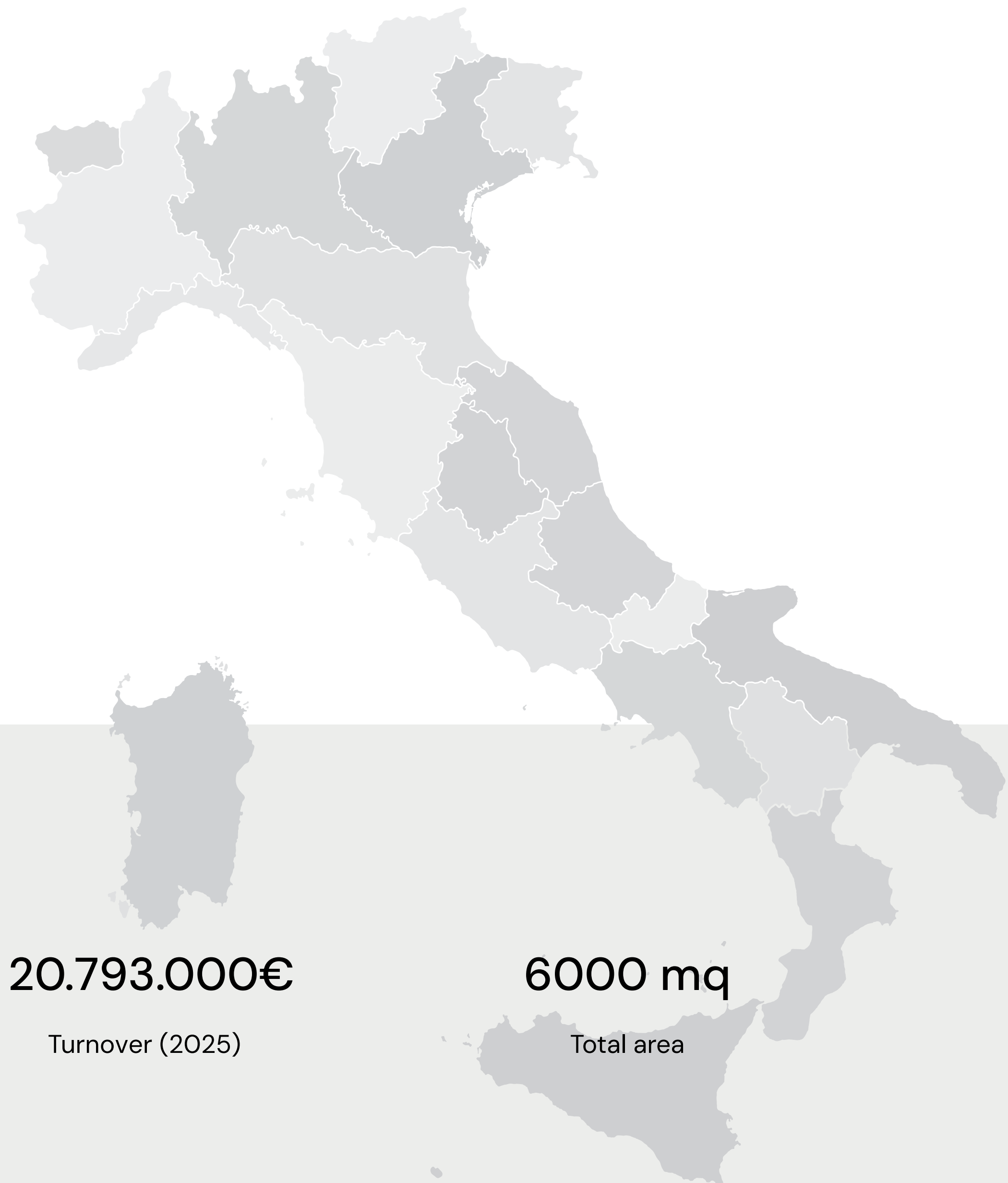
Turnover (2025)

6000 mq

Total area

780

Active clients



Sectors



High pressure

Agriculture, marine, earth-moving, construction, and industrial



Low pressure

Automotive, thermal, medical and biomedical, bioprocess, printing and ink, industrial



Production Areas



Assembly, Low Pressure, Clean Room

We have three dedicated production and assembly areas within a 5,000 m² warehouse. The hose assembly area includes five independent lines — three automated, one for urgent work, and one for distribution. The low-pressure assembly area includes an ISO 7 Clean Room for biopharmaceutical assemblies and a grey zone for low-pressure kit processing and testing.

Services

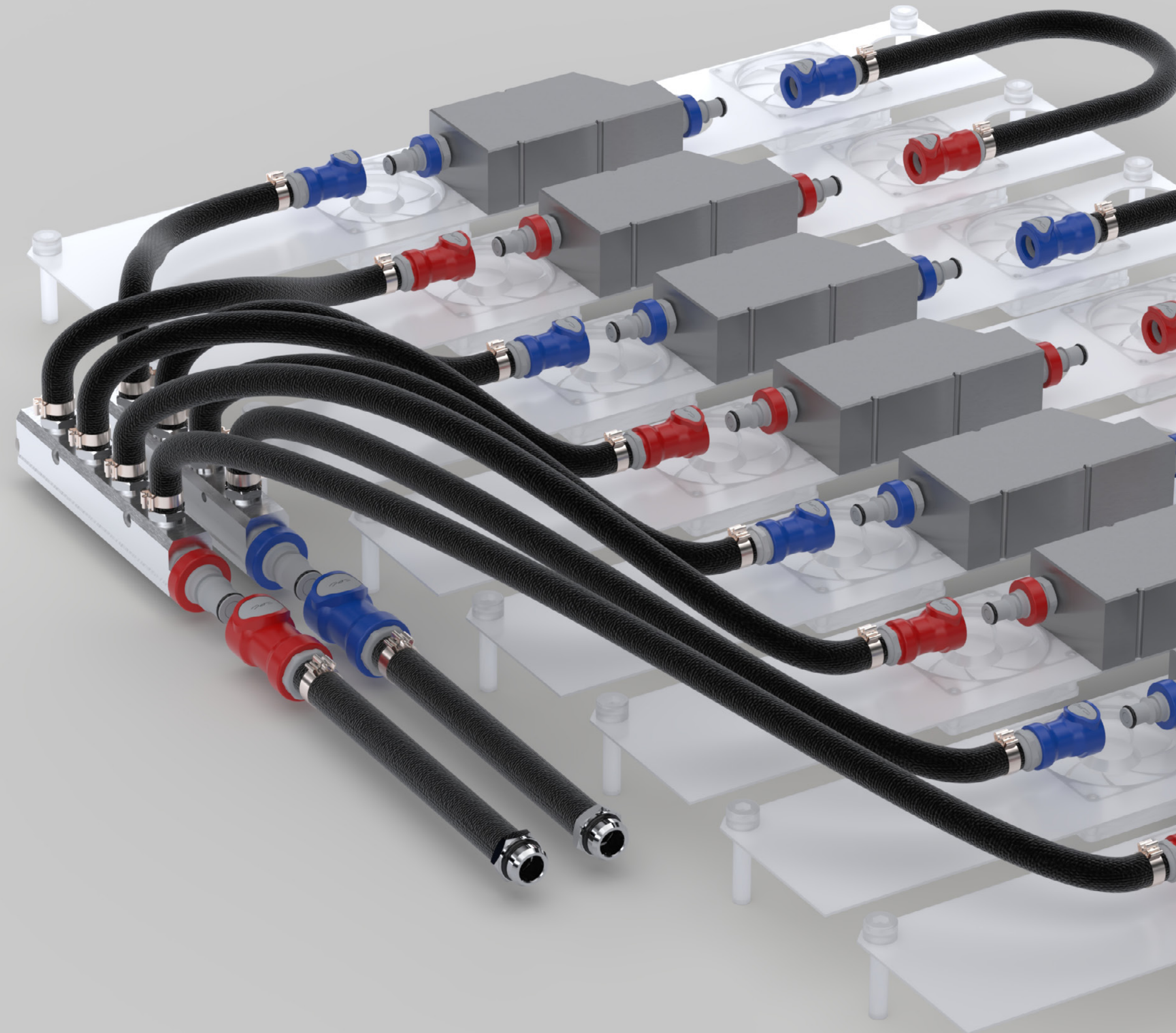
Co-Design of Kits

Promatec's core business focuses on the sale, co-design, and production of customized solutions using standalone products, kits, or assemblies.

We offer complete support starting from technical consulting aimed at analyzing each client's production and design needs.

We develop detailed 3D drawings to support proposal visualization and integration into the final application.

Upon request, we also manufacture custom single components.



Products | High Pressure



Quick couplings in brass, steel, aluminum, and stainless steel, with or without valves, including flat-face and custom versions



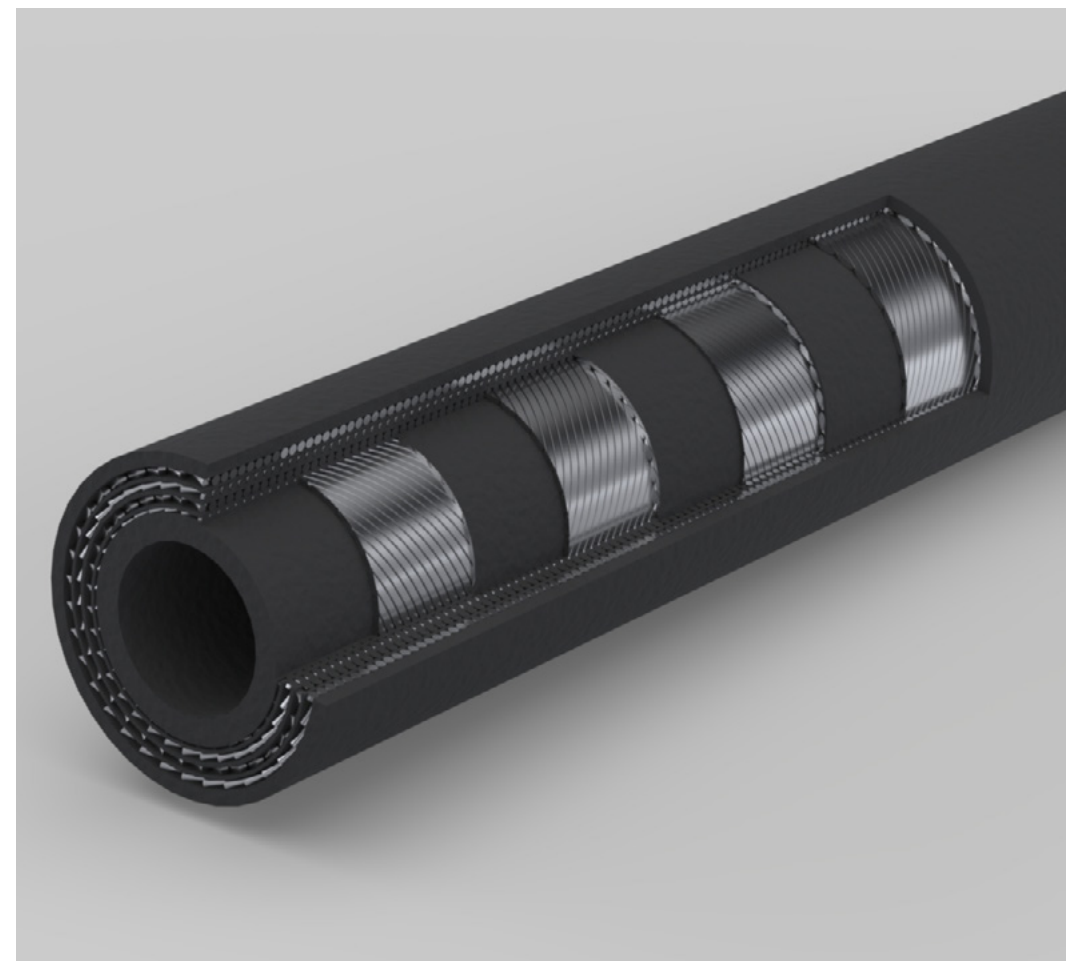
Metal fittings in carbon and stainless steel, press fittings for flexible hoses, and adapters



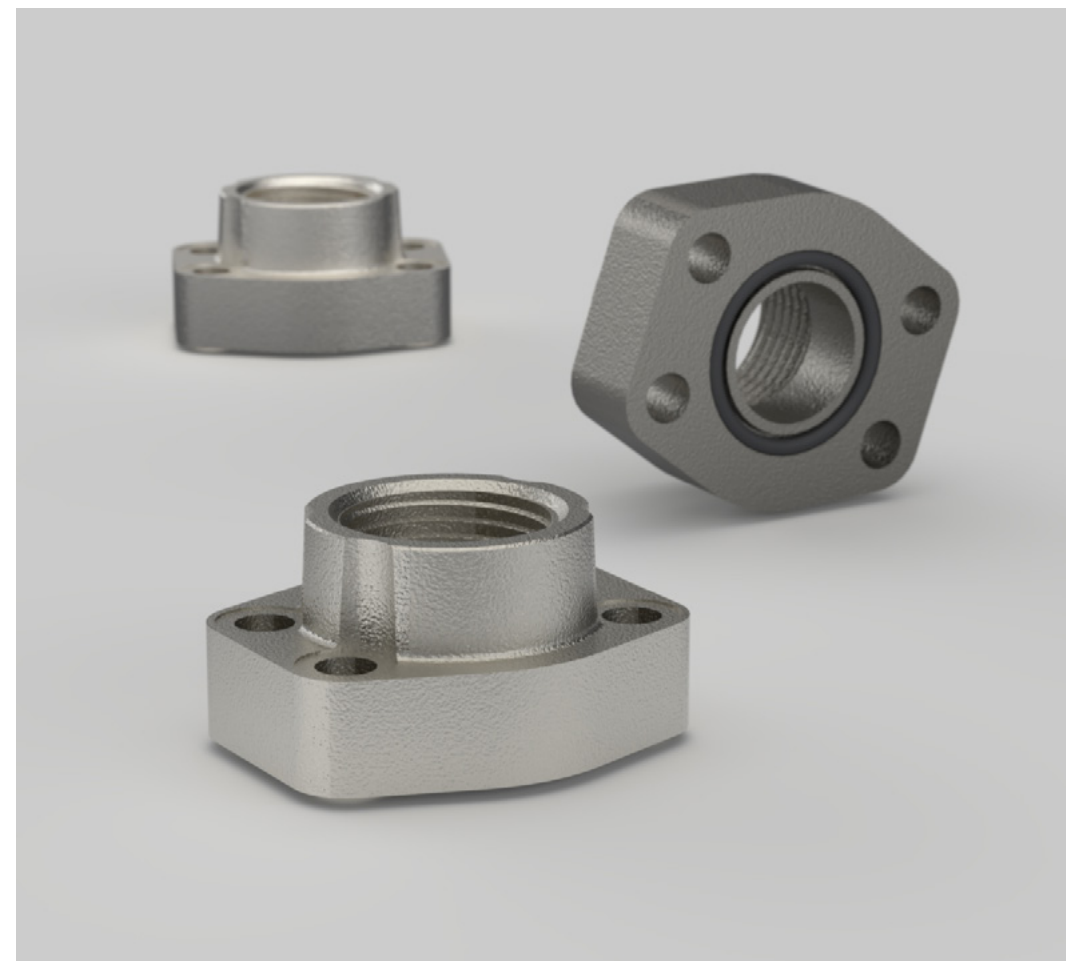
High-torque **piston motors**
Medium and heavy-duty **piston pumps**



Tube deformation machines DIN 2353 Walform for carbon and stainless steel tubes Ø6–42 mm



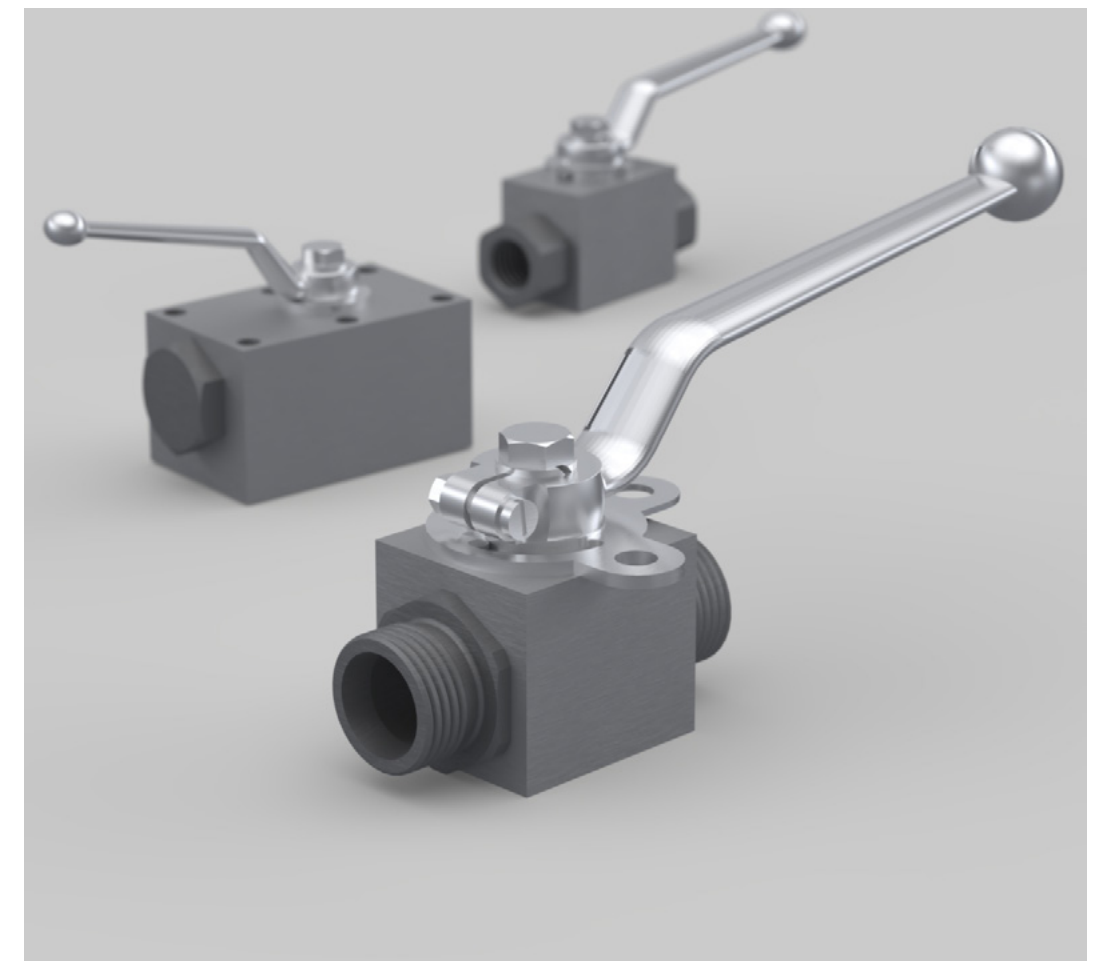
Braided and spiral flexible hoses for low, medium, and high pressures



SAE 3000/6000 and CETOP **flanges** in carbon and stainless steel



Swivel joints in brass, carbon steel, and stainless steel from 2 to 6 ways



Ball valves in carbon and stainless steel, standard and special versions

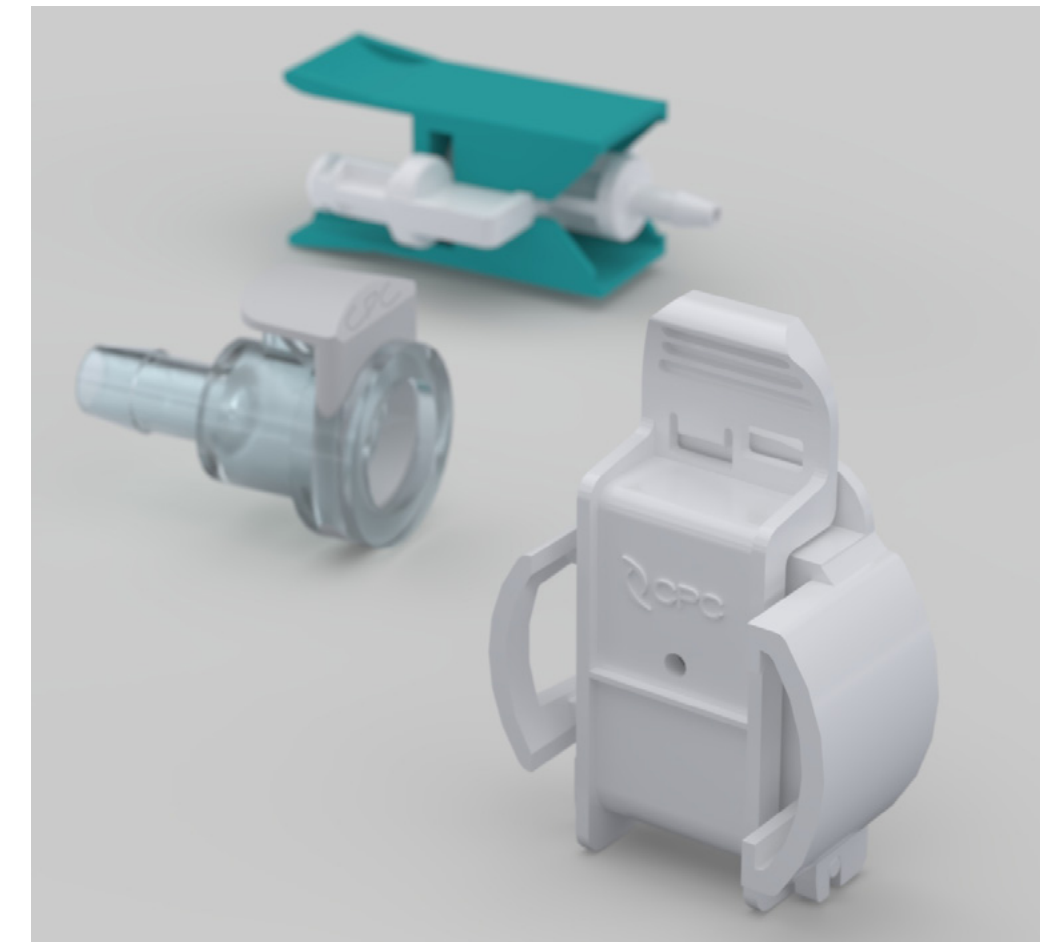
Products | Low Pressure



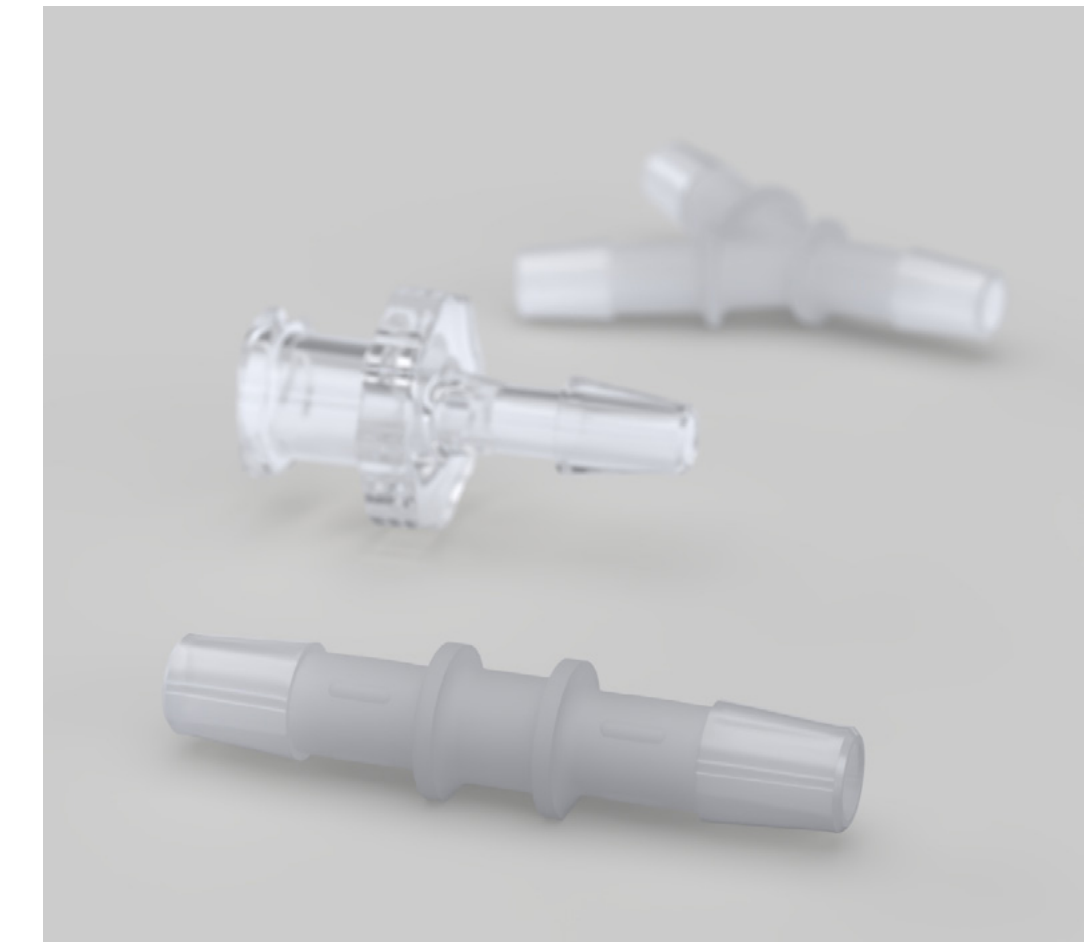
Quick couplings in acetal, PP, PPSU, brass, aluminum, and stainless steel, with or without valves, also with custom terminations



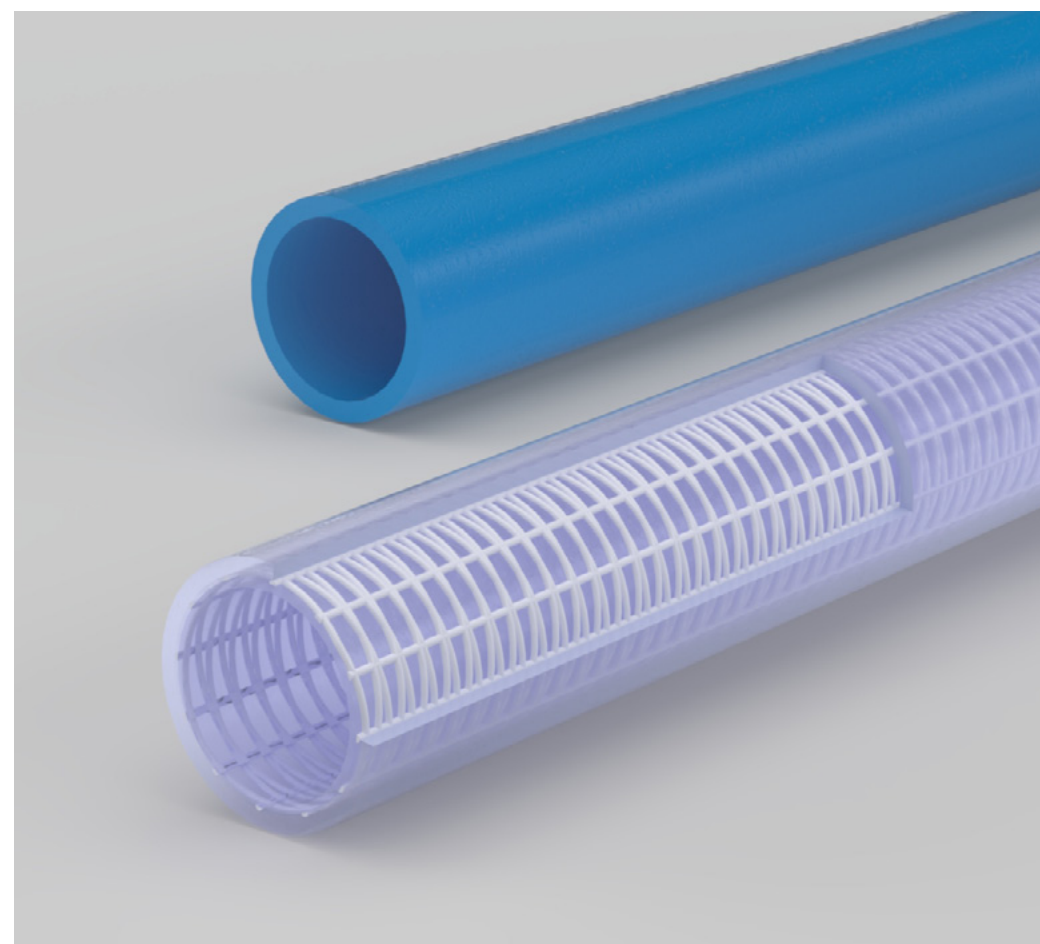
Plastic fittings in PP, PA, PVDF with hose barb, push-in, quick-connect, and threaded terminations



Biopharmaceutical quick couplings in PPSU, PC, and PSU (USP VI and ISO 7) with sanitary, hose barb, and luer terminations



Single-use plastic fittings in PP, PVDF, PC (USP VI and ISO 7) with sanitary, hose barb, threaded, and luer terminations



Plastic tubing in PU, PA, PTFE, PVDF, PE, PVC, silicone, and TPE (USP VI and ISO 7 preformable)



Custom-made **preformed hoses** in all types of rubber (NBR, HUBR, EPDM, FKM, UMQ, etc.) with or without reinforcement (KEVLAR, meta-aramid, polyester)



Capsule and disc filters in PP, nylon, PE, and PTFE (including ISO 7), with over fifty termination types available



Degassers for flow rates from 6 ml/min to 20 l/min, with threaded or luer terminations

Services

Motor repair

Promatec is a reference point for the testing, inspection, and repair of hydraulic motors and pumps, providing top-quality services for agriculture, industrial, earth-moving, and marine sectors.

To offer a complete service, in 2025 we will add a repair center to our component distribution business. Following the upcoming Poclain Hydraulics audit, it will become a Certified Repair Center (CRC) — the first and only one in Italy.



Technology

100 kW next-generation test bench



Certifications

Certified original Poclain Hydraulics spare parts





Services

Tube bending

Promatec has introduced a new service dedicated to rigid tube bending. We offer custom-shaped rigid tubes made of steel, stainless steel, copper, and aluminum according to client specifications. Clients may provide technical drawings or request on-site measurements.

Using our high-precision scanning arm, we record geometric coordinates for perfect project fidelity. We guide clients through every phase — from feasibility assessment to custom quotation and final production.

Service includes:

- Bar cutting
- Custom shaping
- Deburring and internal cleaning
- End forming for DIN 2353 fittings
- Integration with flexible hose and fittings

Services

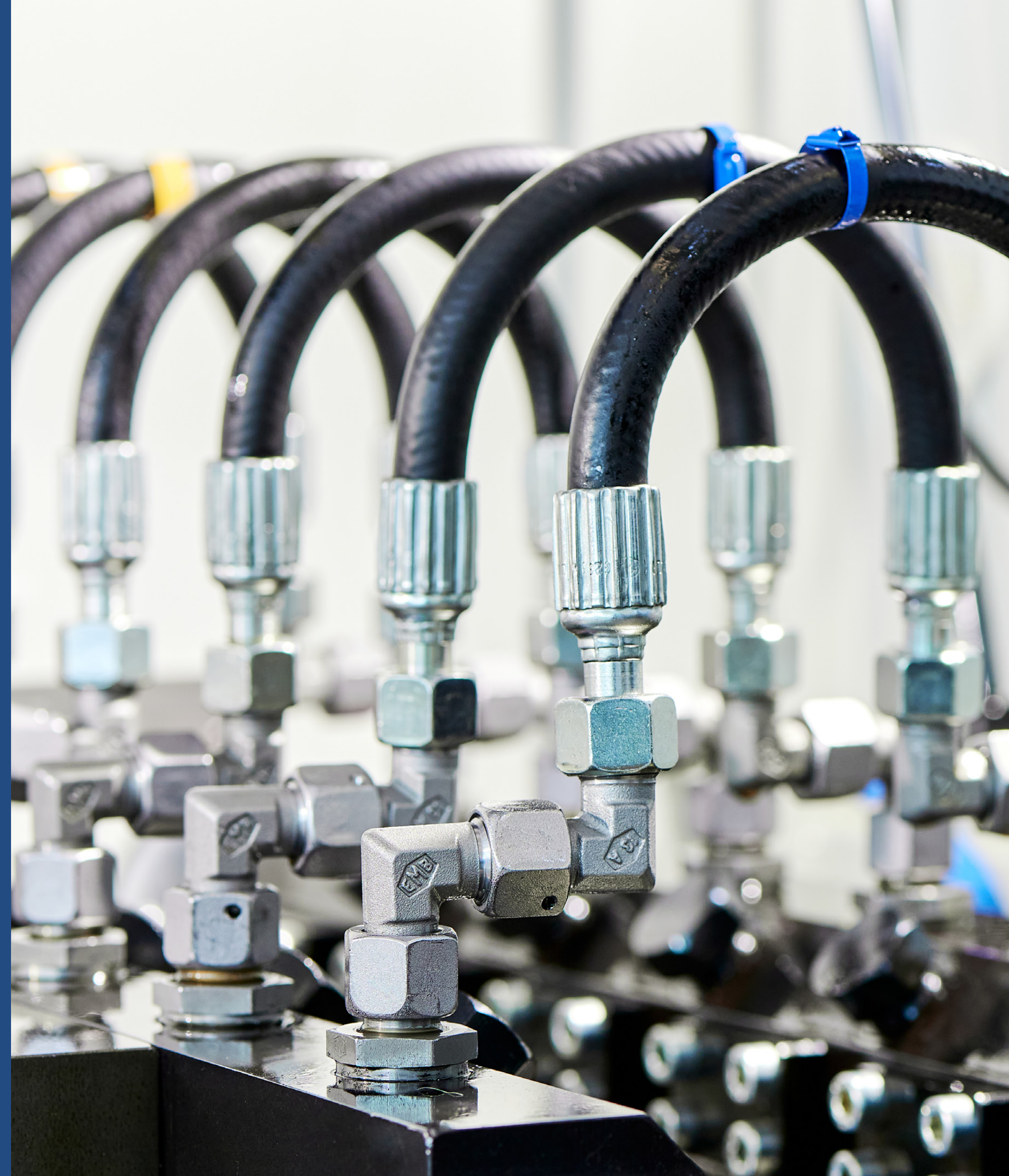
Analysis and Testing

Promatec offers a full range of analysis and measurement services, leveraging extensive experience in mechanical and fluid dynamics sectors. Our technicians operate directly at the client's site using precision instruments to identify anomalies.

We also perform burst and leak tests up to 2,500 bar to verify hose strength. With a new Bimal Test Industry impulse bench, we can simulate hose fatigue resistance to assess performance and durability.

We also perform flushing operations using a machine equipped with a particle counter and PLC, allowing certification of flushing levels up to NAS 6 – ISO 17/15/12.

Upon client request and evaluation, we can provide declarations and certificates of origin for our suppliers' components.



Contacts



Phone

+39 02 9469801



Email

info@promatec.it



Address

Via Per Castelletto, 3/5
20080 Albairate (MI)